



Fabbrica

MADE IN OXFORD



180,000 sq ft GIA

A brand new part-five/part-four storey building accommodating lab, office and collaboration space.

Science In The City

The only commercial science location within walking distance to Oxford Station, The University of Oxford and the city centre. This uniquely provides both broad accessibility and attractive amenity for future talent.

The West End

Phase 2 of Oxford's Central Science District with an identified pipeline of over 2.5m sq ft of commercial and University science buildings.

The developer



145,000 sq ft of lab and office space in the center of Bristol's innovation district



Project Newton. A new 1m sq ft urban Science district in Cambridge

Mission St/ BGO

- Leading specialist operator, investor and developer in Science and Innovation Buildings
- 1.5m sq ft committed innovation pipeline
- Due to complete the next available Science and Innovation buildings in Oxford and Cambridge markets



Inventa, Oxford. 65,000 sf delivered in 2023



Fabrica

15

Oxford Station

Nuffield West End Sites

Oxpens

Osney Mead

Future Science Development

Future Science Development



Future Science Development

Future Science Development

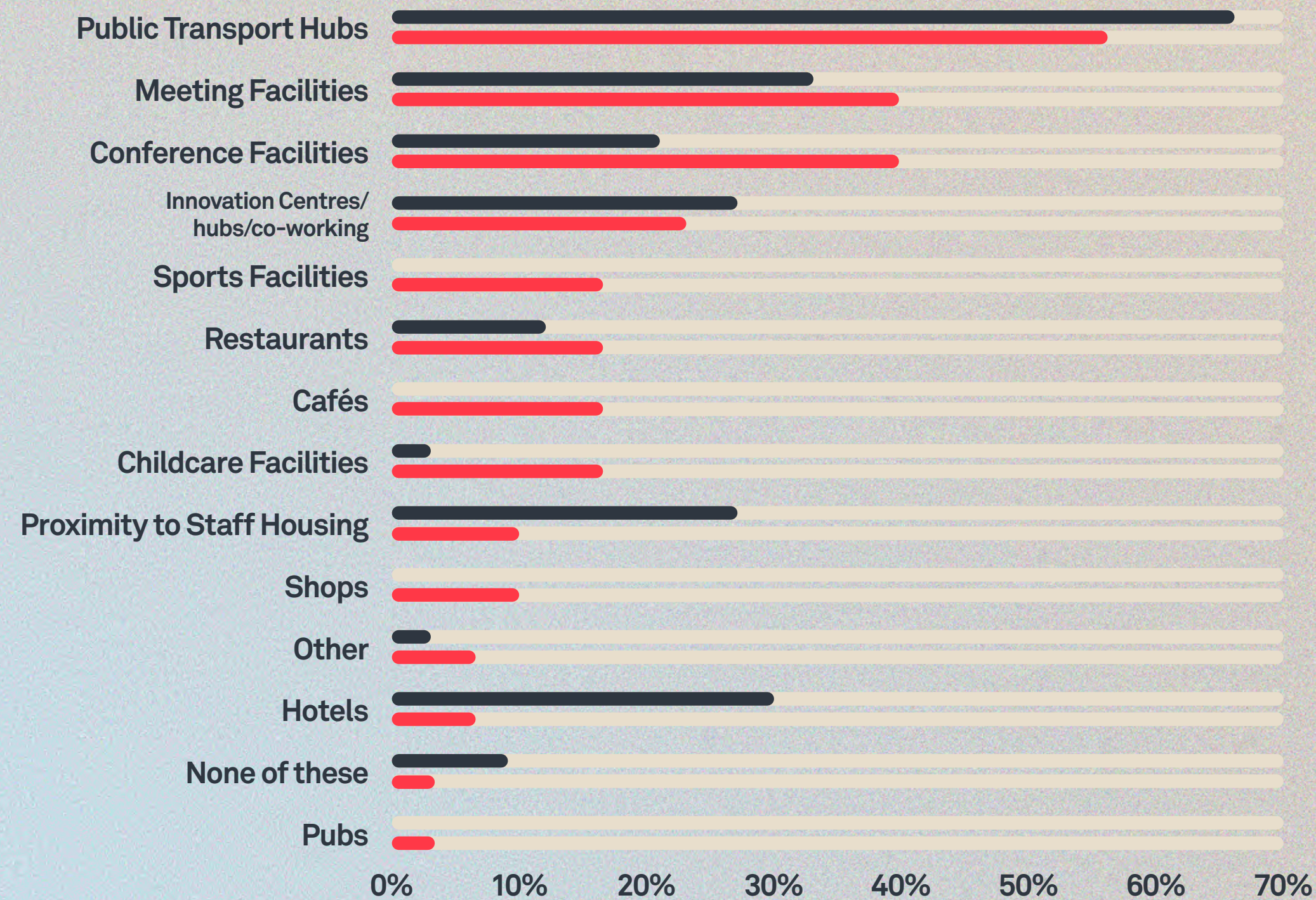


Science In The City

The West End – Oxford's Central Science District

Responding to research

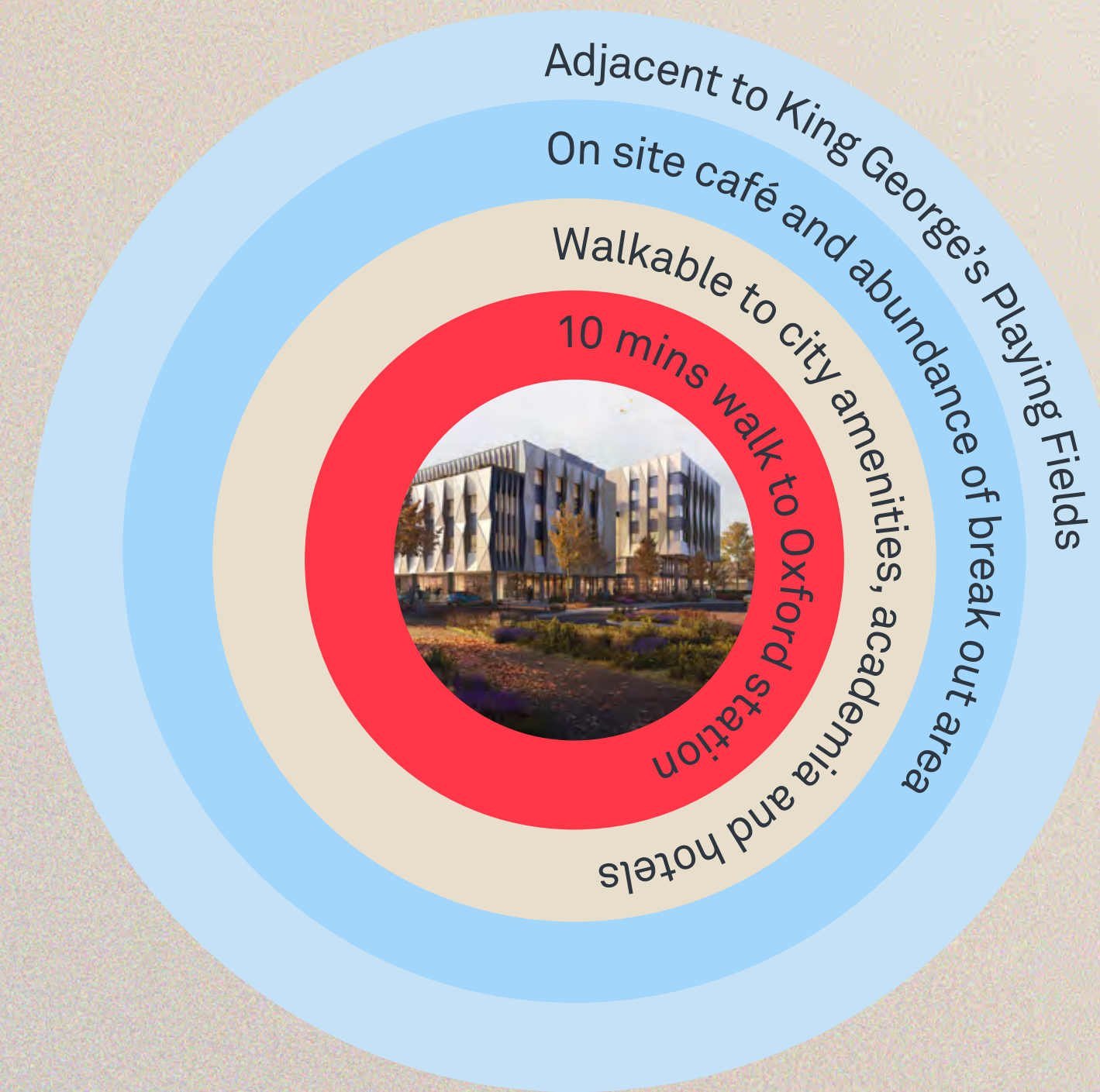
Relative Importance of Facilities to Large R&D Businesses



Source: *Bidwells and YouGov

Life Science Other R&D Sectors

Unrivalled Access to Talent



77% of Life Science companies identify recruitment and retention as the **Number One** priority for their decision making'





CGI of main entrance.

The Building

FLOOR	GIA		NIA	
	SQ FT	SQ M	SQ FT	SQ M
RF	2,939	273	-	-
4th	23,907	2,221	19,720	1,832
3rd	38,750	3,600	31,560	2,932
2nd	41,495	3,855	34,348	3,191
1st	40,246	3,739	33,315	3,095
GF	32,072	2,980	16,017	1,488
TOTAL	179,413	16,668	134,959	12,538





**Designed for 60/40
lab to office split**

**6.9 x 6.9m
structural grid**

**4m slab-to-slab
height**

**Gravity-fed
drainage stacks**

**2.3MW power across
the entire building**

**Min 6 air changes per
hour to 60% of the
occupied space**

Ground Floor

5,500 sq ft
of ground floor
atrium space

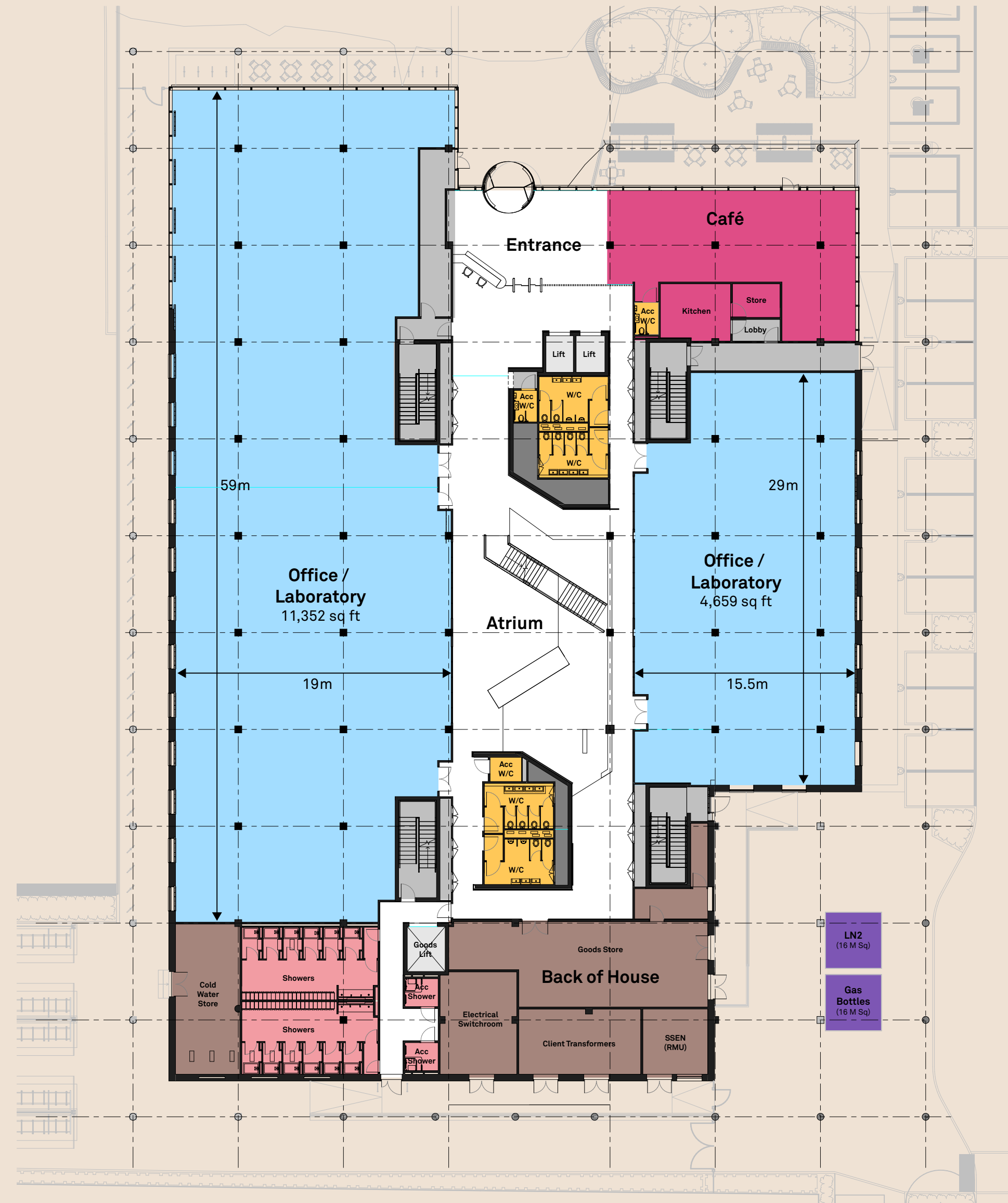
1,700 sq ft
café for occupiers
and public

4,750 sq ft
dedicated to internal
back of house

74
Car Parking Spaces

14 Showers
(2 accessible)

80 Lockers
(minimum)



■ Workspace
 ■ Café
 ■ Toilets
 ■ Showers
 ■ Back of House
 ■ Gas/LN2 Store
 ■ Lifts
 ■ Core

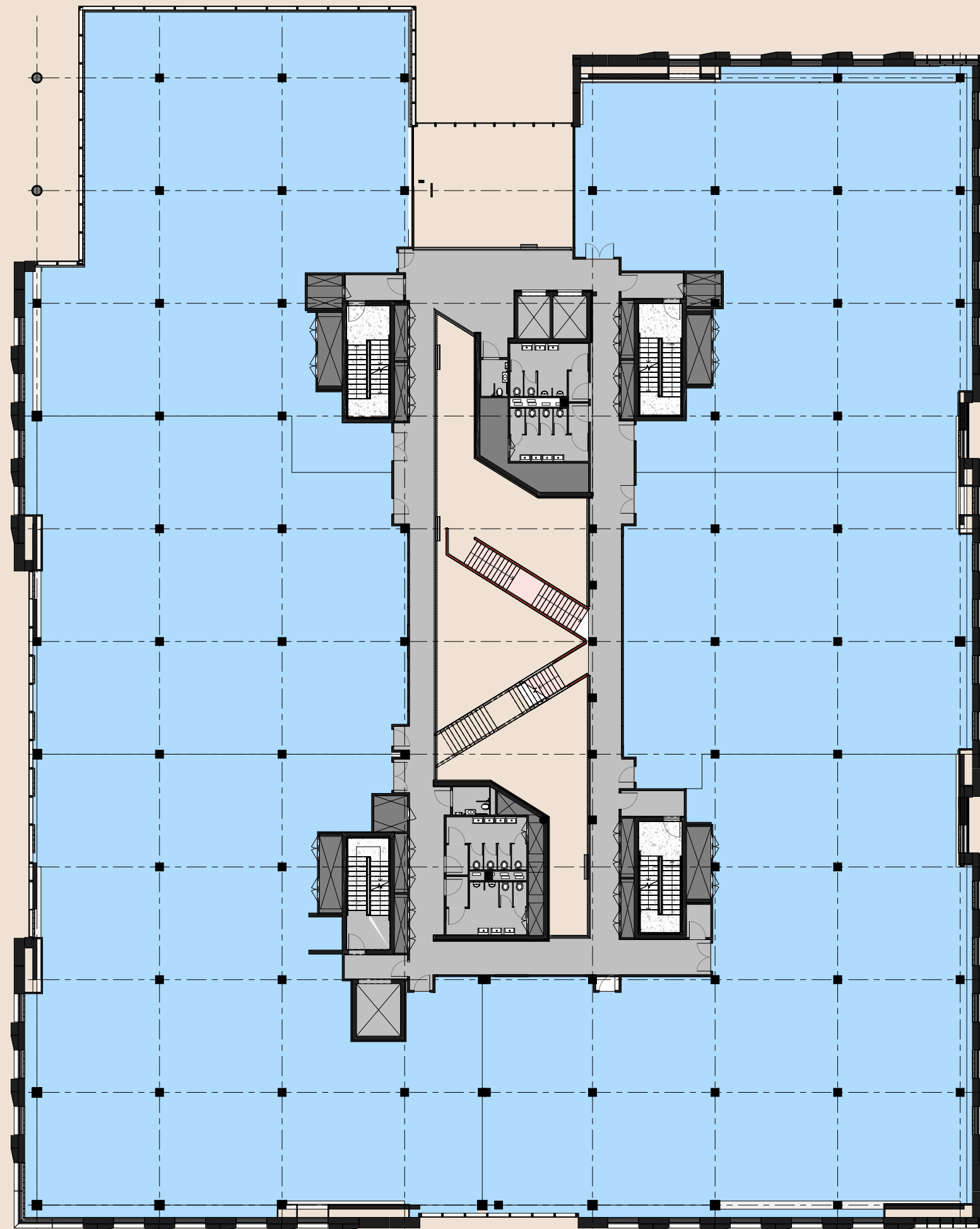


Designed with 100% flexibility for lab and office

1st Floor

GIA
40,246 sq ft
3,739 sq m

NIA
33,315 sq ft
3,095 sq m

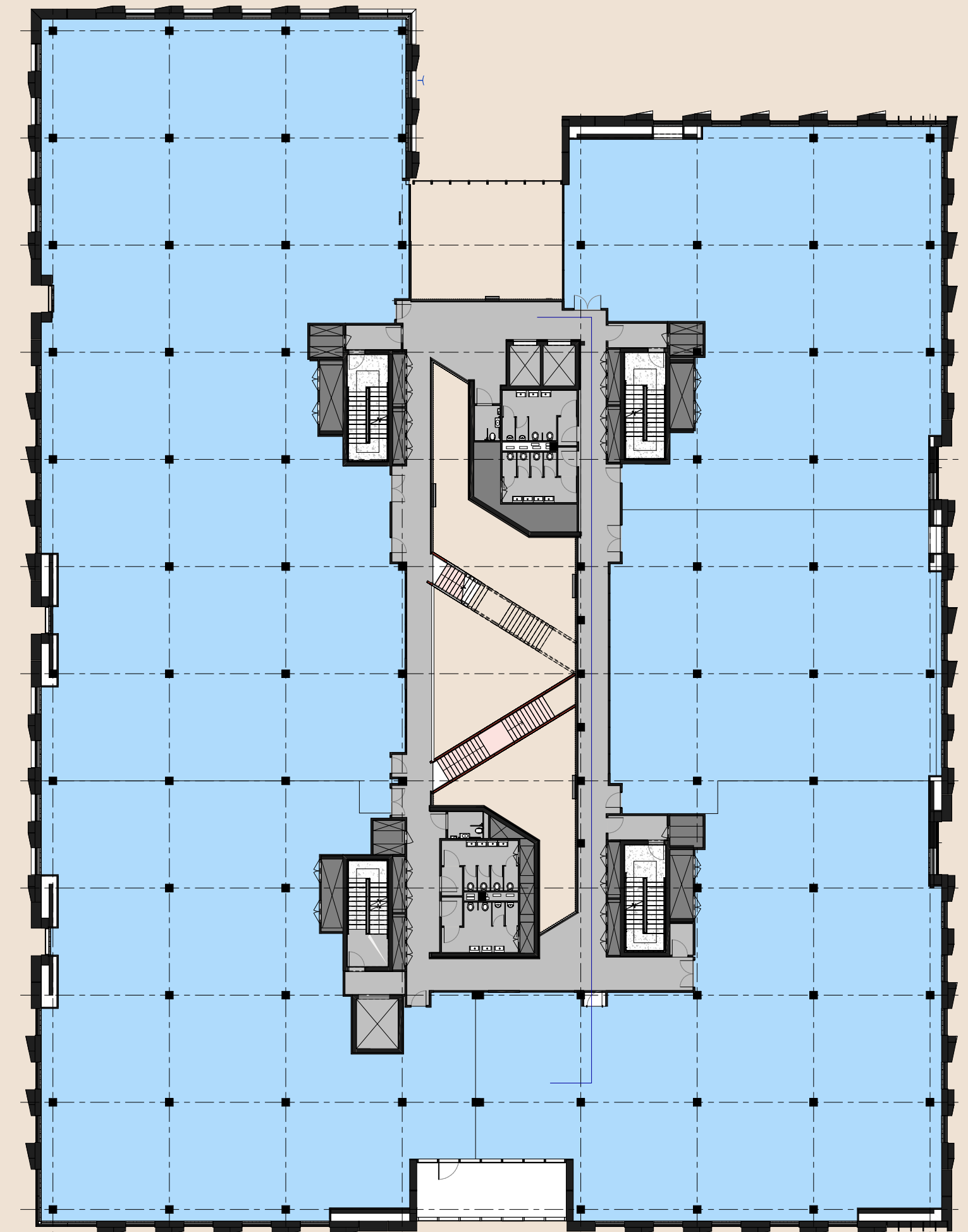


Workspace Core

2nd Floor

GIA
41,495 sq ft
3,855 sq m

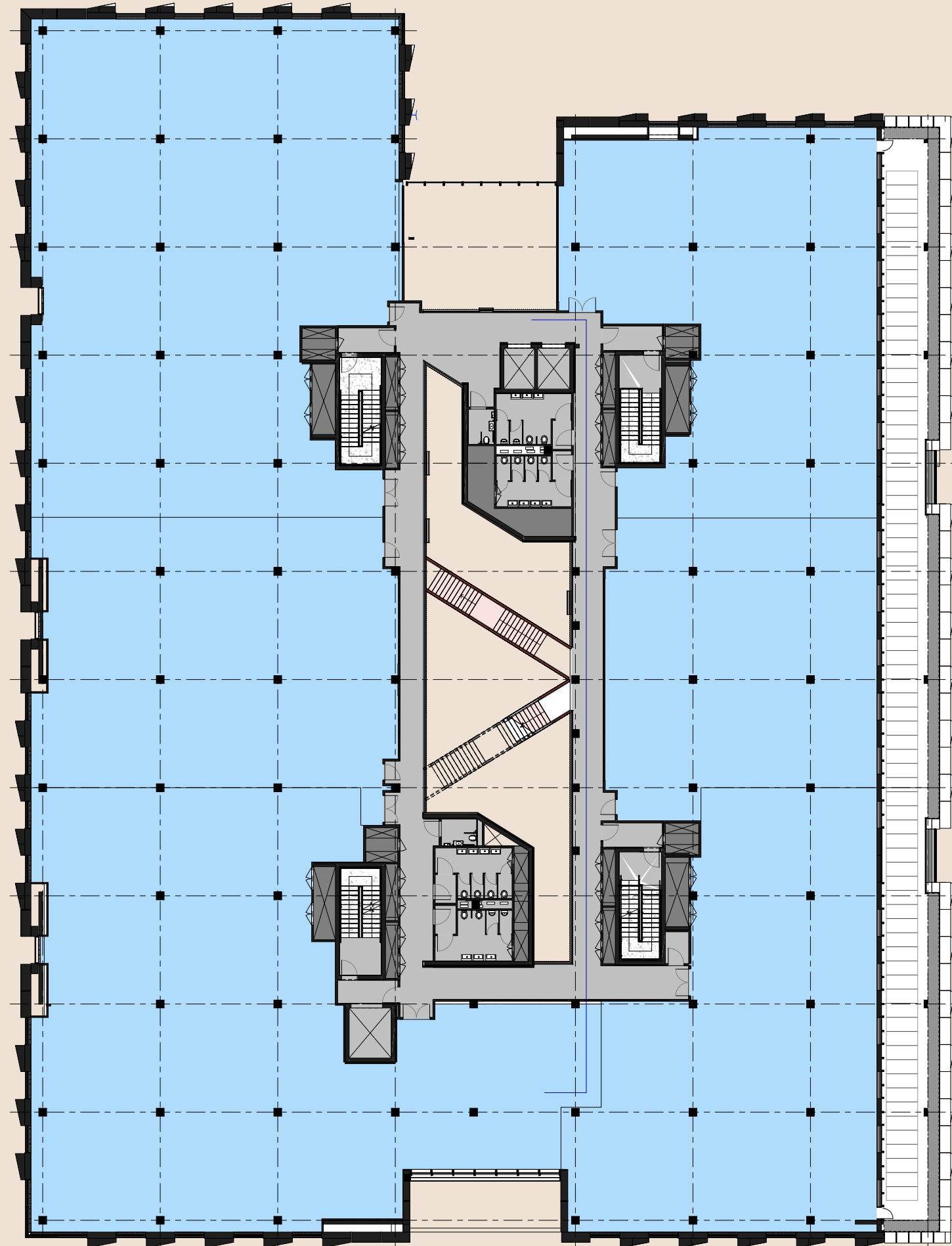
NIA
34,348 sq ft
3,191 sq m



3rd Floor

GIA
38,750 sq ft
3,600 sq m

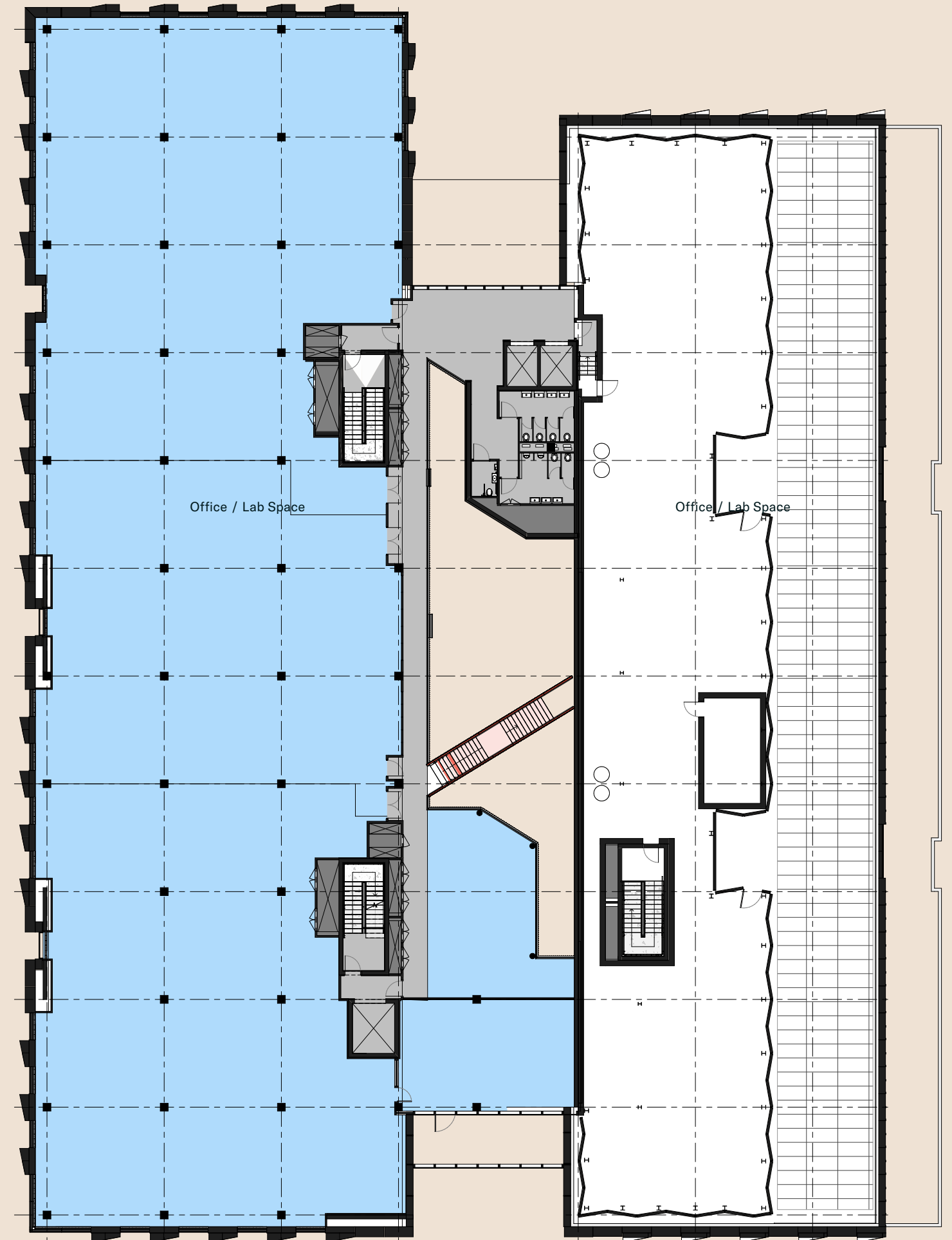
NIA
31,560 sq ft
2,932 sq m



4th Floor

GIA
23,907 sq ft
2,221 sq m

NIA
19,720 sq ft
1,832 sq m



Workspace Core

Not to scale. Indicative only.

Building the future



10 mins walk to
Oxford Station

EPC A

BREEAM[®]
Excellent



Wiredscore:
Platinum (targeted)

**Oxford's First Living
Wage Building**

**Access to Hinksey
Meadow Playing Fields**

EV Ready

**Photovoltaic
Panels**

**224 Cycle
Parking Spaces**

**14 showers
(2 accessible)**



For further information please contact:

CBRE

Richard Venables
richard.venables@cbre.com
+44(0)7816 491 860

Kevin Wood
kevin.wood@cbre.com
+44(0)7900 584 150


BIDWELLS

Rob Beatson
robert.beatson@bidwells.co.uk
+44(0)7976 590 996

George Brown
george.brown@bidwells.co.uk
+44(0)7881 664 483

Mission St/

Gabriel Rudert
gabriel@mission-property.com
+44(0)7894 420 429

Colin Brown
colin@mission-property.com
+44(0)7717 896 838

Important Notice: 1. Particulars: These particulars are not an offer or contract, nor part of one. You should not rely on statements by Bidwells LLP or Creative Places in the particulars or by word of mouth or in writing ("information") as being factually accurate about the property, its condition or its value. Neither Bidwells LLP or Creative Places has any authority to make any representations about the property, and accordingly any information given is entirely without responsibility on the part of the agents, seller(s) or lessor(s). 2. Photos etc: The photographs show only certain parts of the property as they appeared at the time they were taken. Areas, measurements and distances given are approximate only. 3. Regulations etc: Any reference to alterations to, or use of, any part of the property does not mean that any necessary planning, building regulations or other consent has been obtained. A buyer or lessee must find out by inspection or in other ways that these matters have been properly dealt with and that all information is correct. 4. VAT: The VAT position relating to the property may change without notice. Bidwells LLP is a limited liability partnership registered in England with registered number OC344553. February 2024. Designed by studio185.london | 613

Fabrica

MADE IN OXFORD

Another Sciences development by

Mission S^t/  BGO

fabrica-oxford.com

Seacourt Park & Ride
(794 spaces)

Oxford University Sciences Faculty

John Radcliffe Hospital

Oxford University Campus

Life and Mind Building

 Oxford Station

Oxford Brooks University

Fabrica

Old Road Campus



Oxford City Centre

Inventa

The West End

Oxford has produced the highest number of spin outs in Europe over the last 15 years